

Technical Specification

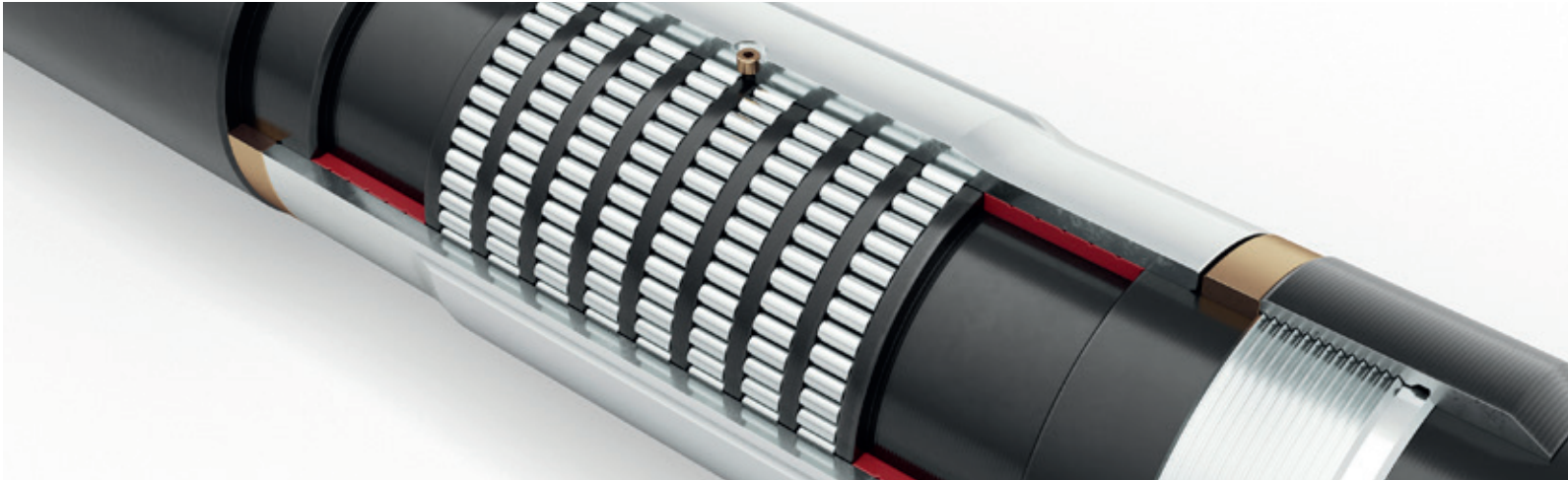
Outer Body Diameter In (mm)	8.00 (203.2)
Upset Sleeve Diameter In (mm)	8.05-8.25 (204.5-209.6)
Inner Diameter In (mm)	3.00 (76.2)
RPM (max recommended)	160
Length (approx.) Ft (m)	4 (1.2)
Connection	To suit
Internal Yield Pressure Psi (bar)	10,500 (450)
External Collapse Pressure Psi (bar)	10,500 (450)
Max Temp°F (°C)	150 (300)
Max load (tension) Lbf (mT)	1,200,000 (545)
Dynamic Side Load lbf (mT)	14,000 (6.4)
Static Side Load lbf (mT)	20,000 (9)
Torsional Yield	Connection

Note: Technical Specifications are for guidance only and are subject to change without noticeAlternative sizes available on request.

Technical Advantages

- Ultra-low friction
- Super-strong and robust
- Fully encapsulated single-body design
- Casing wear significantly reduced
- Operational torque reduced
- Cased and open-hole safe
- HP/HT

MonoVolve REDUCER
Advanced drillstring torque isolation



MonoVolve REDUCER is a drillstring sub which reliably reduces the effects of side-loading and high torque associated with rotation of the drill string in the cased and open hole. It’s ultra-durable single-bodied, single-sleeved design has been developed specifically with rugged reliability at its core.

MonoVolve REDUCER works to minimise casing wear and reduce damage to the drill string tool joints. Slip-stick effect and torque and drag burden is minimised when drilling complex 3D or extended reach wells thereby extending bit life and increasing ROP.

MonoVolve REDUCER is recommended for use in any application where system performance may be encumbered or hampered by excessive torque due to well conditions or wellbore geometry or where casing wear or tool joint integrity may be at risk such as in extended reach drilling, complex 3D or HP/HT drilling, slot recovery or side-tracking, and in P&A activities.

Operator Benefits

- Casing wear significantly reduced
- Tool joints protected
- Operational torque reduced
- Slip-stick & vibration minimised
- Bit life extended
- ROP increased
- ERD capability enhanced

Operating guide to use

MonoVolve REDUCER is a short sub which is designed to be integrated into the drill string and racked-back for ease of operation during the entire drilling program.

HydroVolve engineers will assist with drill string design with torque and drag analyses performed by our specialists to provide the optimum placement recommendation for MonoVolve REDUCER.

Technical Features

